



SENTINEL
DOOR CONTROLS, LLC

4000 Series

Grade 1
Cast Iron
Door Closers




Features & Benefits



Features

- ANSI/BHMA A156.4 Grade 1 certified
- Adjustable spring sizes 1 - 6
- Cast iron closer body
- Standard and heavy-duty arms available as hold open or non-hold open
- Adjustments for backcheck, closing and latch speed
- Tri-packed for parallel, regular or top jamb installation
- Sleeve nuts and bolts provided with each closer
- Retrofit for LCN 4040XP
- Non-handed
- Plastic cover
- 10 year warranty
- Backcheck
- Closing speed
- Latching speed
- Delayed action; specify

Compliance Standards

- Certified for ANSI/BHMA A156.4 Grade 1 **BHMA CERTIFIED**
- 90 minute positive pressure fire rating per UL10c and CAN / ULC S104 **UL**
- Meets requirements for Americans with Disabilities Act (ADA) and ANSI/BHMA A117.1 

Benefits

- **Reliable:** Adjustable spring power, latch and closing speeds ensure positive latching
- **Flexible:** Choice of standard or heavy-duty arms and adjustable spring power meets needs of any application
- **Hassle-Free Retrofits:** Easily replaces competitive closers
- **Strong and Durable:** ANSI/BHMA Grade 1 certified for long life

CAUTION: Door Closers for Low Opening Force Applications:

Door closers installed in openings required to meet the requirements of the Americans With Disabilities Act or ANSI/BHMA Standard A117.1, when adjusted to meet those requirements, may not provide adequate closing power to dependably close and latch the door based on opening or site conditions.

Width	Cover Dimensions	
	Length	Projection
3-1/2" (89mm)	12-1/4" (311mm)	2-1/4" (57mm)

ANSI/BHMA Code Finish Description

Aluminim Painted



Dark Bronze Painted

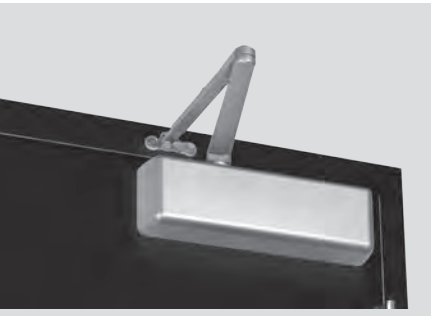


Black Suede Powder Coat



Arm Options

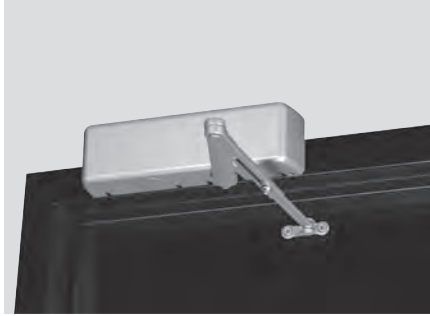
Regular Arm



Non-hold open arm shown, hold open application available.

- Pull side application, double lever arm
- Sufficient frame, door and/or ceiling clearance must be considered
- Due to arm projection, application may present an aesthetics issue or be prone to vandalism

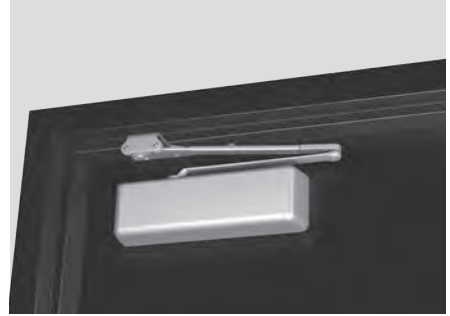
Top Jamb



Non-hold open arm shown, hold open application available.

- Push side application
- Sufficient frame face and/or ceiling clearance must be considered
- 2-1/4" (57mm) top rail on door is required
- Best door control for doors in exterior walls that swing out of building
- Consideration must be given to depth of reveal

Parallel Arm



Non-hold open arm shown, hold open application available.

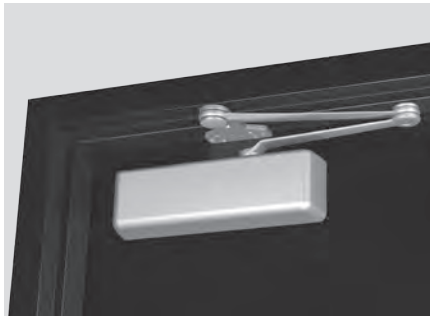
- Push side application
- In the closed position, there is little or no hardware projection beyond the frame face
- Due to arm geometry, approximately 25% less power-efficient than regular arm application
- Closer and arm mounted below the frame stop

Holder/Stop Arm



ARM4016HCNS ARM OPTION
(hold open) shown

- Holder/Stop arms incorporate a stop at the arm's soffit plate to dead stop the door at a predetermined degree of door swing between 85° and 110°, in 5° increments
- Prior to dead stop, backcheck slows the door speed to reduce the stop action



ARM4016CUSH ARM OPTION
(non-hold open, without stop) shown

- Holder/Stop arm is intended for use where an auxiliary door stop cannot be used and low to moderate abuse is anticipated
- Stop is removable to allow for additional applications where auxiliary door stops are installed

Non-Hold Open

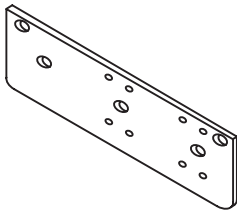
Self-closes door every time door is opened. Auxiliary stop (by others) required except when using the Holder/Stop arm.

Hold Open

Achieved by means of friction or ball and detent/roller. Friction hold open has a range of 90° to 180° using template location and mechanical adjustment. Ball and detent or roller hold open is effective in a range of 85° to 110°.

Hold open arm door closers are not permitted to be used on fire door assemblies.

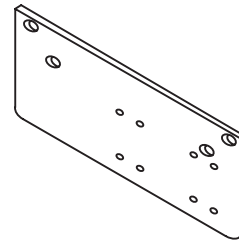
Closer Mounting Plates



DP401618

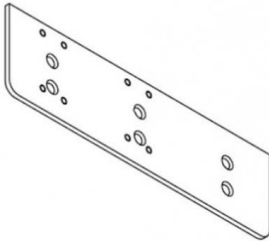
Narrow Frame Drop Plate (regular arm)

Required for hinge side mount where top rail is less than 3-3/4" (95mm). Plate requires 2" (51mm) minimum top rail.



DP401618PA

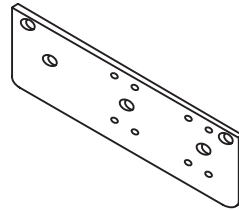
Narrow Top Rail Drop Plate (parallel arm) Required for parallel arm mounting where top rail is less than 5-1/2" (140mm), measured from the stop. Plate requires 2" (51mm) minimum top rail.



DP401618TJ

Narrow Frame Drop Plate (top jamb)

Required for hinge side mount where top rail is less than 3-3/4" (95mm). Plate requires 2" (51mm) minimum top rail.

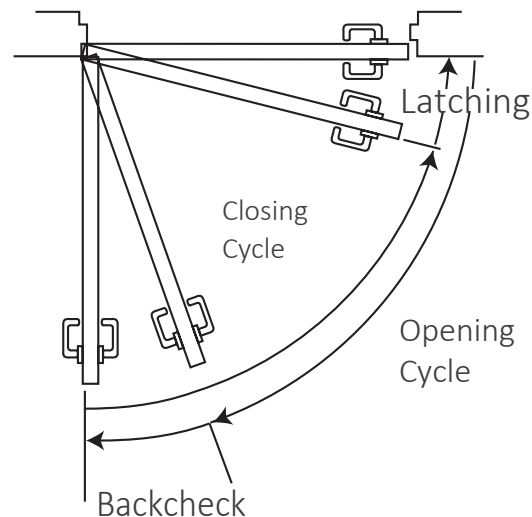


DP401618G

Narrow Frame Drop Plate (low ceiling)

Required for hinge side mount where top rail is less than 3-3/4" (95mm), Ceiling interference. Plate requires 2" (51mm) minimum top rail.

Door Closing Latching Cycle



Notes:

- For heavy-duty parallel rigid arm applications, specify CUSH or HCUSH.
- Before installing a door closer, verify the accessibility, fire, and life-safety requirements that are in effect. This includes the mounting height and projection into the clear opening. Check the adopted state and local building codes and consult the Authority Having Jurisdiction (AHJ).
- To maintain the warranty and ensure proper operation of the product, follow the installation instructions & templates and install on the inside of the building.
- Consult NFPA 80 for the hinge requirements on a fire door.
- Failure to use fasteners supplied with closer may void factory warranty.
- Optional fasteners are available for a variety of applications. Consult the door and frame manufacturer to ensure the proper fasteners are used to maintain certifications.
- Sizing charts are based on 1-3/4" x 7' standard weight doors swinging to 110°. Other application conditions (i.e. larger door heights or weight) may require larger size closer. Adjusting the spring power to meet the low opening force requirements of the Americans With Disabilities Act or ANSI/BHMA Standard A117.1, may not provide adequate closing power to dependably close and latch the door in some conditions (i.e. air movement from wind gusts or building stack pressure).